



partenariat local d'immigration
windsor essex
local immigration partnership

Spring Council Meeting

Réunion du Conseil du Printemps

May 16, 2024

Le 16 mai, 2024

Funded by:

Financé par :



Immigration, Refugees
and Citizenship Canada

Immigration, Réfugiés
et Citoyenneté Canada

Welcome

Bienvenue

Ronnie Haidar, WE LIP Chair
University of Windsor





Une version française
de cette
présentation est
disponible en-ligne!

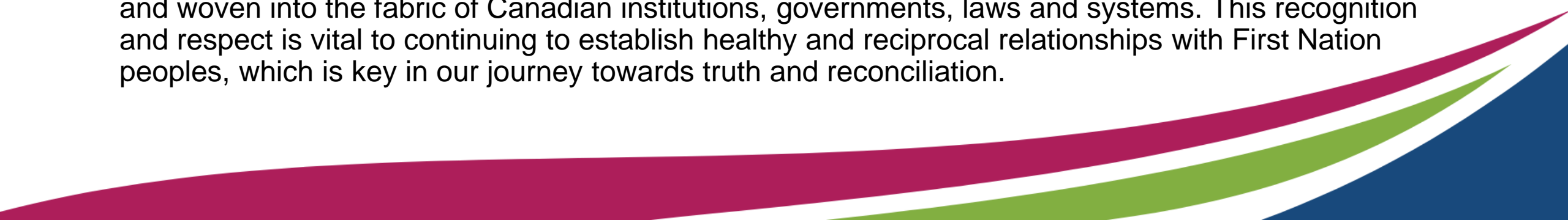


Land Acknowledgment

We would like to acknowledge the land on which the Windsor Essex Local Immigration Partnership (WE LIP) and its member organizations work and gather is comprised of the traditional territories of the Three Fires Confederacy made up of the Ojibway, Odawa, and the Potawatomi Nations and the ancestral and unceded territory and waters of Caldwell First Nation whose people are the original people of Pelee Island and Point Pelee.

The Ojibway, Odawa, and Potawatomi Nations agreed to share this territory with the British Crown by way of the 1790 Treaty referred to as the McKee Purchase/Treaty of Detroit. This territory is the home of the Anishnaabeg who are represented by the Walpole Island First Nation and the Lunaapeew who are represented by the Delaware Nation.

This acknowledgement is intended to show recognition and respect for First Nation Peoples and their presence on this land in both the past and present. The WE LIP further recognizes that the impacts of colonization upon First Nations, Inuit and Métis peoples of this land are very much present, pervasive and woven into the fabric of Canadian institutions, governments, laws and systems. This recognition and respect is vital to continuing to establish healthy and reciprocal relationships with First Nation peoples, which is key in our journey towards truth and reconciliation.



The WE LIP Executive Team

Ronnie Haidar, WE LIP Chair

University of Windsor

Kelsey Santarossa

Workforce WindsorEssex



The 2024-25 WE LIP Executive Team

Chair Ronnie Haidar, University of Windsor

Vice-Chair Dr. Riham Al-Saadi, Transparency Counselling Services

Member at Large Hussein Kawas, Conseil Scolaire Catholique Providence

Member at Large Yasmine Joheir, Centre communautaire francophone Windsor Essex Kent

Member at Large Rama Musharbashi-Kovacs, Windsor-Essex Catholic District School Board



Election for Member-At-Large

- Elections will take place in Fall
- Terms of Reference
 - Join the Terms of Reference review committee

2024–2025 Projects

PRIORITY 1: Establish and Maintain an Inclusive Partnership Council

- 6 Executive Committee Meetings & 4 Council meetings

PRIORITY 2: Conduct or Contract Out Research On Newcomers' Needs and Community Gaps. Use Research to Establish a Strategic Plan to Identify Community Priorities

- International Student Working Group- a new survey
- Ongoing work with the University of Windsor and PRESMA

PRIORITY 3: Support member-led implementation of action plans leveraging community connections and technology

- Newcomers Exploring In-Demand Jobs in Windsor-Essex – a planning committee will host a conference - October 9
- Data Dissemination Events – Date TBD
- Caribbean Health Fair – May 26

PRIORITY 4: Conduct LIP-led Knowledge Sharing

- SPICE PLC – Date TBD
 - 1 event/webinar with WOWC – Date TBD
- 

2024–2025 Projects

PRIORITY 5: Work in Partnership on Local Campaigns Community Dialogues Focused on Anti-Discrimination or Cultural Diversity Awareness

- WEbelong campaign – WE LIP to host a podcast
- Embracing Anti-Racism Approaches in Integration Processes of Immigrants and Refugees in Windsor-Essex – June 5

PRIORITY 6: Work in Partnership on Activities Related to Newcomer Attraction and Retention

- Public Safety Day – September 15
- 

National Urban Park Hub

Hannah Ruuth & Safa Youness
Windsor Law Centre for Cities





Welcome to the University of Windsor
National Urban Park Hub

Canada's first research, teaching and community engagement project
focused on the creation of national urban parks.

Land Acknowledgement

We acknowledge with gratitude the land, air, water, fire and all the beings of creation that sustain us. We honour the longstanding relations of many First Peoples to this place since time immemorial (including the Anishnaabe, Haudenosaunee, Lunaapee, and Huron/Wendat Peoples). We acknowledge colonial harms. We commit to renewed and respectful relations to people, nature and this place.



Setting our Intentions

Parks Canada

- 171 national historic sites
- 47 national parks
- 5 national marine conservation areas
- 1 national urban park + more on the way!



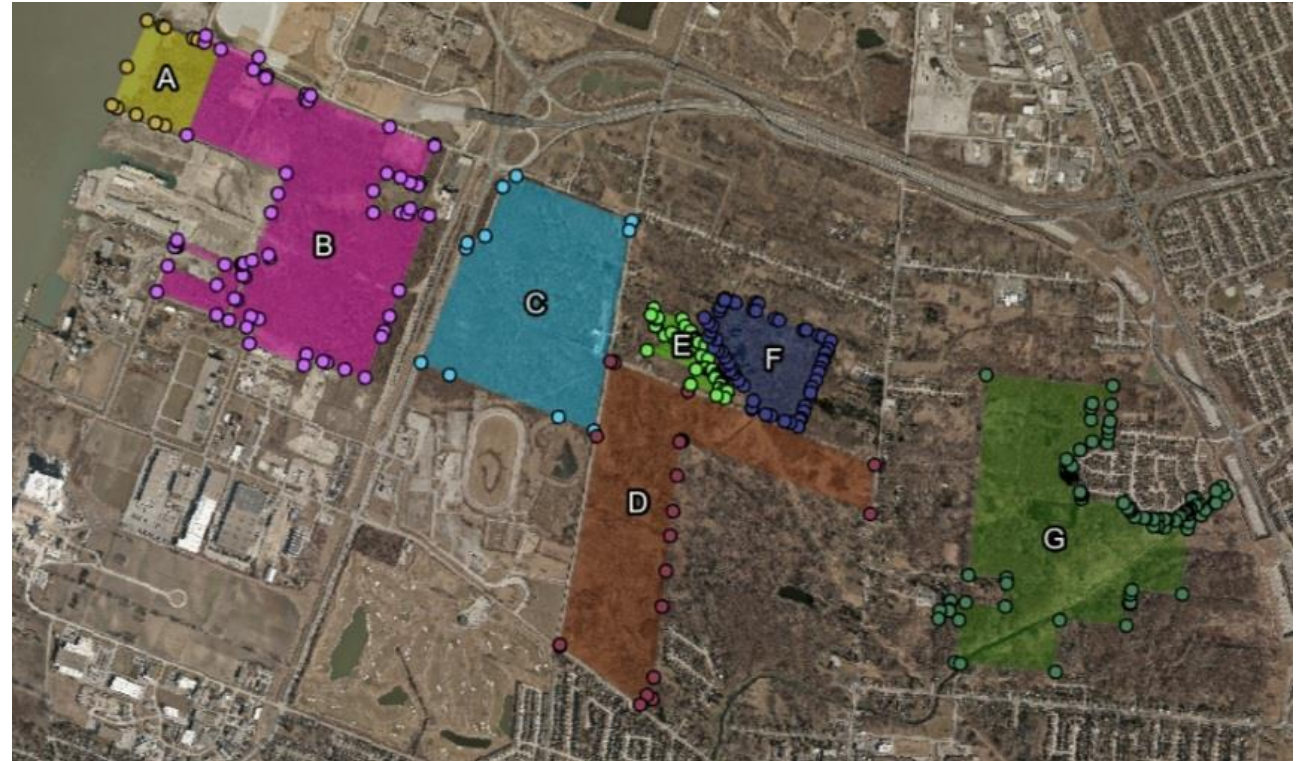


Parks Canada's History of Dispossession and Conservation

Access to Nature

Newcomers & equitable access to nature:

- 63% of respondents to survey's favourite park were located in their ward
- 52% of newly-arrived immigrants (or 11,103 individuals) live in areas where greater investment in parks could improve equity in Windsor



Conservation of nature in urban areas and protecting biodiversity



Providing access to nature for communities as well as enhancing urban greenspaces for conservation and public enjoyment


Advancing reconciliation with Indigenous Peoples




How Windsor Differs



university of windsor
nuph
national urban park hub



Dr. Anneke Smit
Windsor Law Centre for Cities (C4C)
Co-PI



Dr. Catherine Febria
Healthy Headwaters Lab (HHL)
Co-PI



Clint Jacobs
Indigenous Knowledge Table
Co-PI



Rino Bortolin
C4C
Project Manager &
Strategic Adviser



Dr. Ali Mokdad
HHL
Post Doctoral Researcher



Candy Donaldson
IKT/HHL
Relationship Facilitator



Safa Youness
Partnerships &
Engagement
Coordinator



Hannah Ruuth
Partnerships &
Engagement
Coordinator



Alyssa Frazao
Science Manager



Kinew
Indigenous
Youth Circle



Naomi
Indigenous
Youth Circle



Dorian Moore
NUPH Professional
Advisor



Kam Cusumano
Communications
Coordinator



Mike
Indigenous
Youth Circle



Jillian
Indigenous
Youth Circle



Jana Jandal Alrifai
Student Affiliate



Tristan
Indigenous
Youth Circle




Jeff
Indigenous
Youth Circle



Shayenna Nolan
Communications Coordinator /
Indigenous Youth Circle





A photograph of a dense forest with a dirt path. The path is light brown and winds through the center of the frame. The forest is filled with tall, thin trees and a thick layer of green undergrowth. The lighting is soft and natural, suggesting a sunny day with some shade.

“Green beating heart, pumping
Nature into the surrounding city”

- Patrick Barkham, The Guardian

Photo Credits: TWEPI

Research and Engagement Activities

- Survey dissemination
- Tours of proposed National Urban Park
- Place-making activities in local green spaces
- Community group presentations
- Pilot programming
- Participation in Town Halls
- Participation in focus groups on relationships with Nature

The Impact of your Involvement

We plan on sharing our research in the following ways;

- Communicating policy feedback verbally in bi-weekly meetings with Parks Canada
- Sharing policy papers with Parks Canada, the City of Windsor and other municipalities
- Hosting and participating in research seminars
- Publishing of peer reviewed articles

Where You Come In

- What parts of the project are you interested in?
- How can we help you develop your relationship with Nature?
- Working together





Keep in Touch

Instagram: @wl_centreforcities

Facebook: Centre for Cities - C4C

Twitter: @UWcities

Emails:

Hannah.Ruuth@uwindsor.ca

Safa.Youness@uwindsor.ca

BREAK

We encourage you to take some time to step outside and network! (10min)



50 Years of Conservation

Danielle Stuebing

Essex Region Conservation Authority
(ERCA)

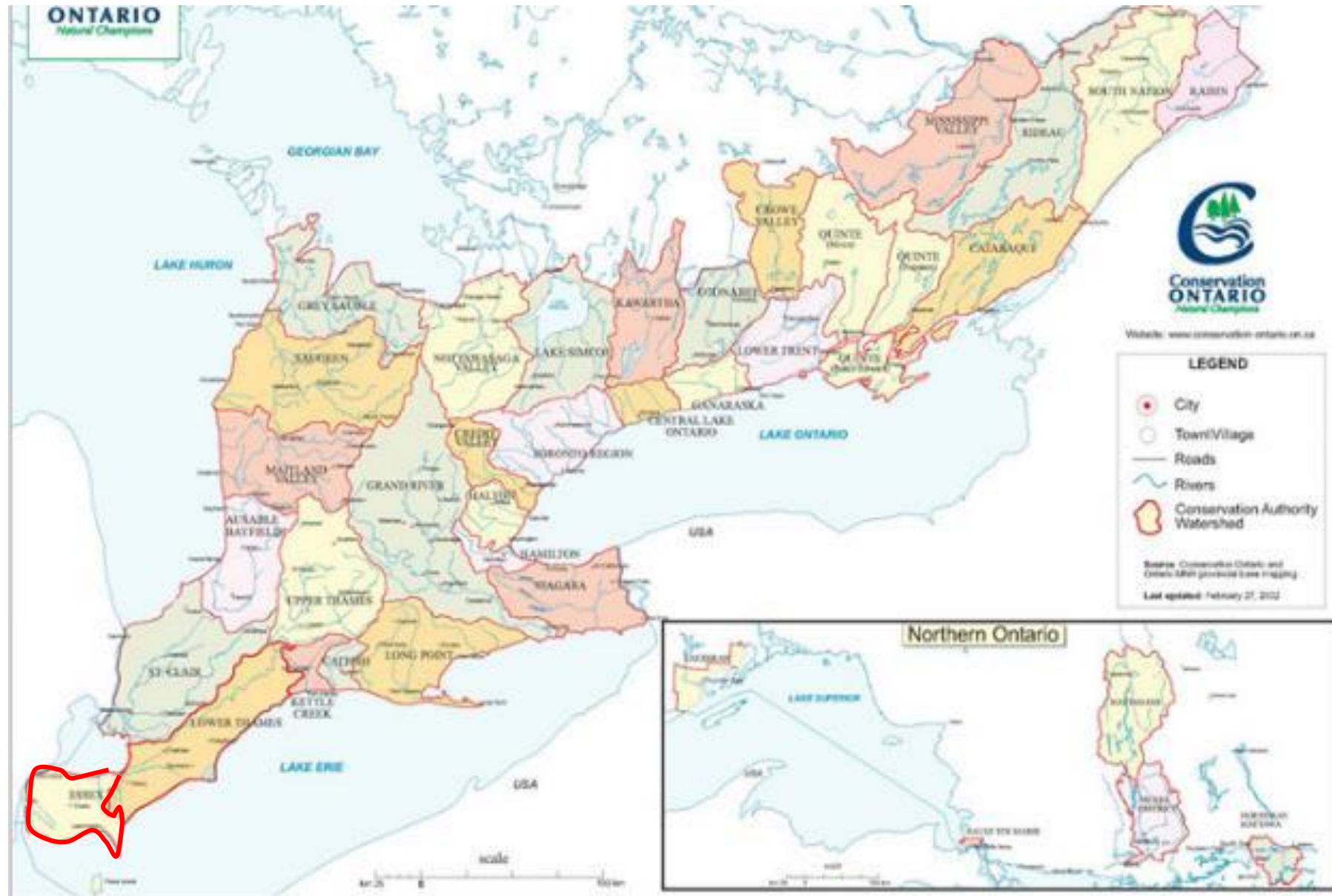


50 Years of Conservation



Essex Region
Conservation Authority
sustaining the place for life

Conservation Authorities



- First established in 1946
- ERCA was the second last CA to be established in 1973
- 90% of Ontario's 12 million population lives in a watershed managed by a Conservation Authority.

Watersheds



Conservation Authorities are **Watershed**-based resource management agencies dedicated to conserving, restoring, and managing Ontario's natural resources.



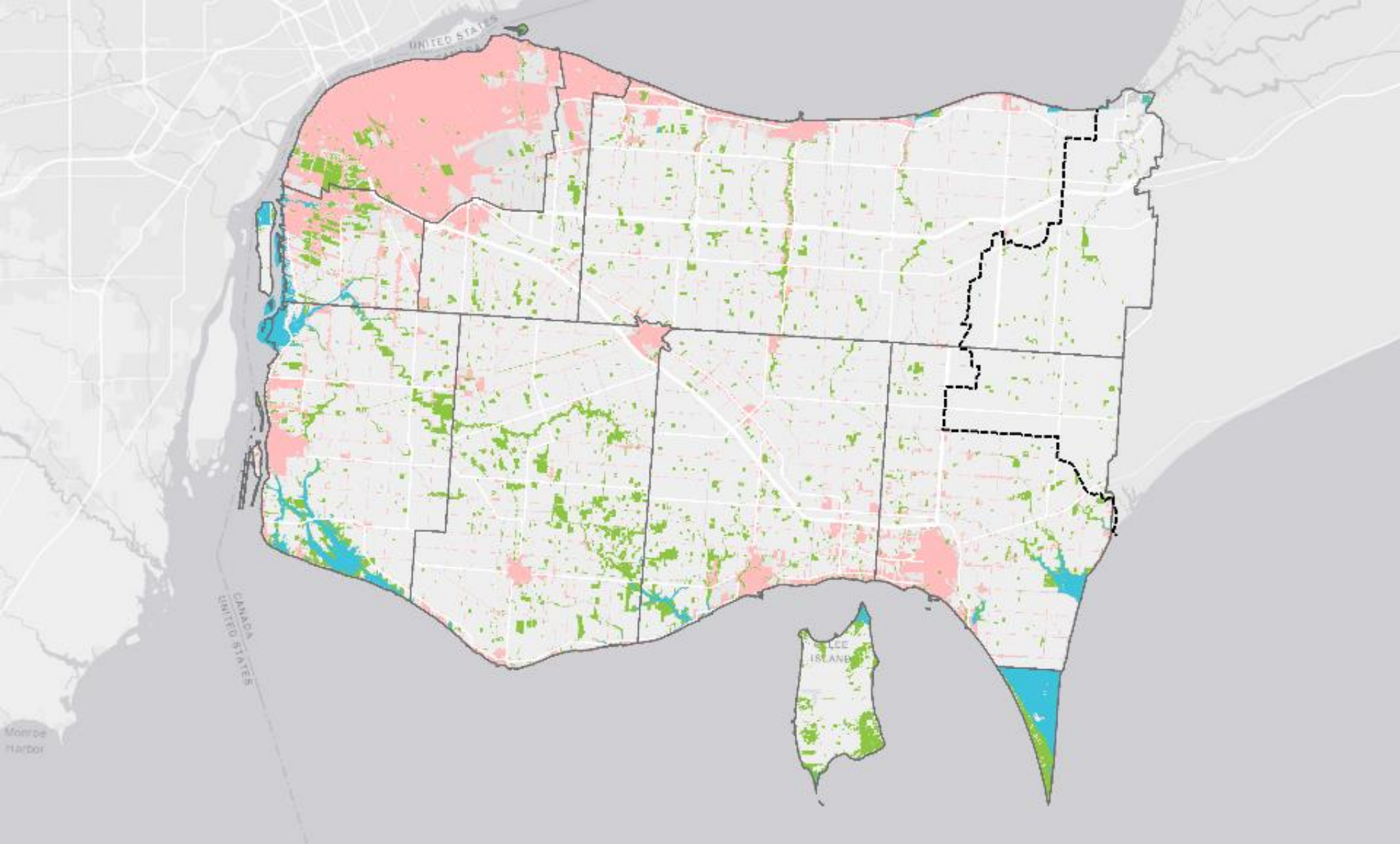
A **watershed** is the area of land that is drained by a river, creek, stream or lake.

A watershed approach means considering the entire ecosystem when making decisions.

Watersheds in the Essex Region



Land Use in the Essex Region



Putting it all Together



Some Highlights



- 17 publicly accessible Conservation Areas
- 100 km of trail
- Over 4,200 acres of conservation lands
- One of first Authorities to undertake comprehensive fill and floodline mapping of the shoreline.
- Planted nearly 7 million trees
- Educated more than 350,000 students
- Detroit River – Canadian Heritage River
- Western Lake Erie Watershed – Priority Natural Area

Conservation Areas and Trails



Essex Region Conservation
the place for life

ERCA Conservation Areas & Greenway Trails Map

Conservation Areas

- | | | |
|--------------------|-------------------------------|----------------------------|
| 1. Devonwood | 7. Hillman Marsh | 12. John R. Park Homestead |
| 2. McAuliffe Woods | 8. Andrew Murray O'Neil Woods | 13. Holiday Beach |
| 3. Maidstone Woods | 9. Stone Road Alvar | 14. Big Creek |
| 4. Ruscom Shores | 10. Cedar Beach | 15. Petite Côte |
| 5. Tremblay Beach | 11. Cedar Creek | |
| 6. Kopegaron Woods | | |

Greenway Entrances (CEs)

- | | |
|-------------------------------------|---|
| 16. Caesars Windsor CE | 21. WFCU Credit Union CE |
| 17. Harrow Rotary CE | 22. Tilray Brands Plant Positivity CE |
| 18. Schwab Farms CE | 23. Windsor Essex Community Foundation CE |
| 19. Kingsville Train Station CE | 24. Sadler's Pond CE |
| 20. Colasanti's Tropical Gardens CE | 25. Rotary (1918) Centennial Hub |

To learn more about things you can see and do at each area, visit:
essexregionconservation.ca/conservation-areas/

Routes

- | | |
|-------------------------------|---|
| Rotary (1918) Centennial Hub |  |
| Cypher Systems Group Greenway |  |
| Chrysler Canada Greenway |  |



Map based on CWATS
Transportation
Map

Program Area Highlights



- Protecting people and property from flooding and erosion
- Land Use Planning
- Drinking Water Source Protection
- Water Quality Research and Monitoring
- Tree planting and restoration
- Geographic Information Systems
- Conservation Areas and Trails
- Land Acquisition for protection/restoration
- Community Stewardship
- Conservation Education
- Agricultural Best Management Practices



Restoration Efforts

▪ Habitat Restoration Projects

- Tree Planting
- Prairie/ Meadow Creation
- Wetland Enhancement and Creation

▪ Agricultural Best Management Projects

- Windbreaks/ Grassed Buffers
- Rock Chutes
- Cover Crops
- Crop Nutrient Plans





Watershed Report Card



Groundwater



Forest Conditions



Surface water



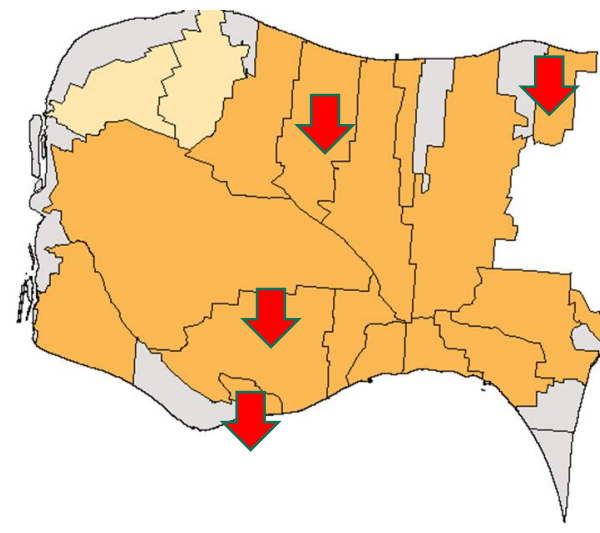
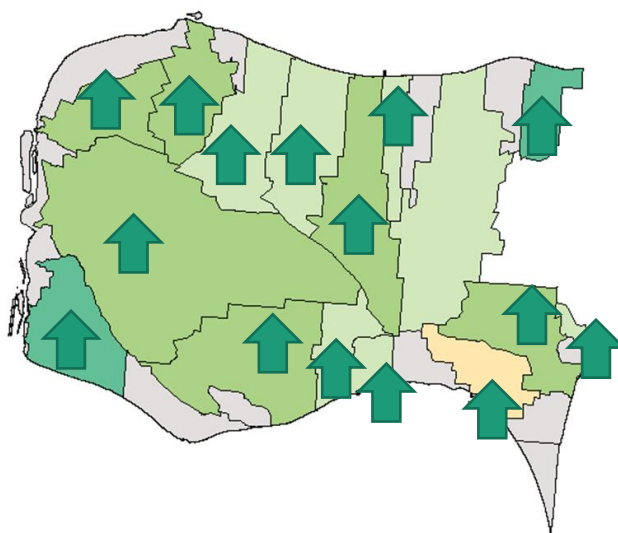
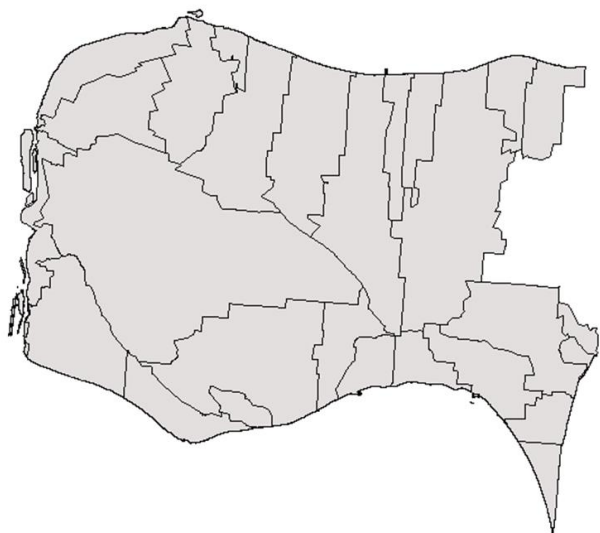
Restoration Efforts

Benthic

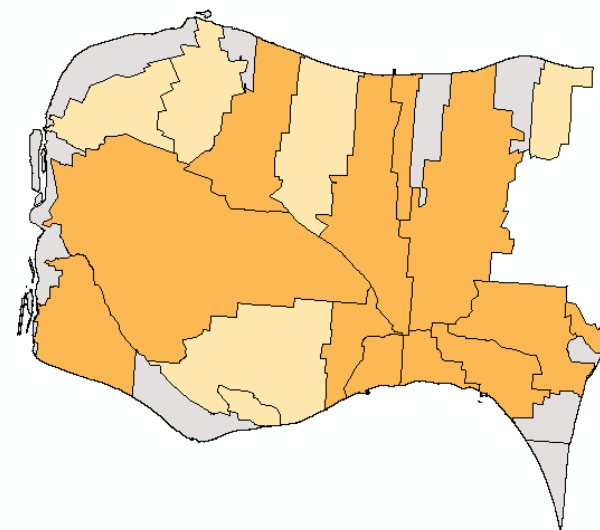
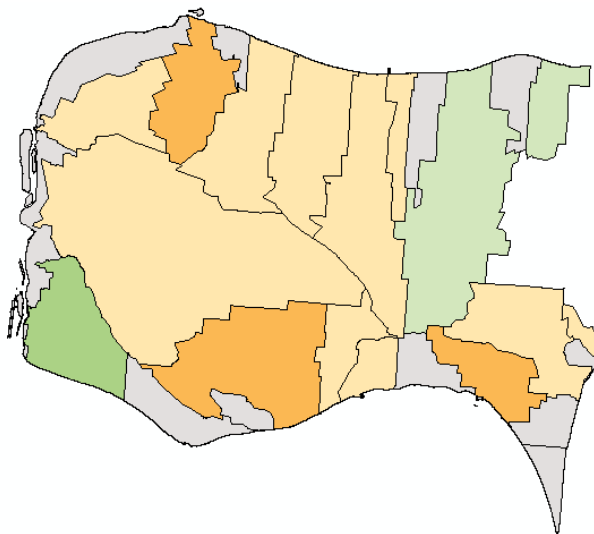
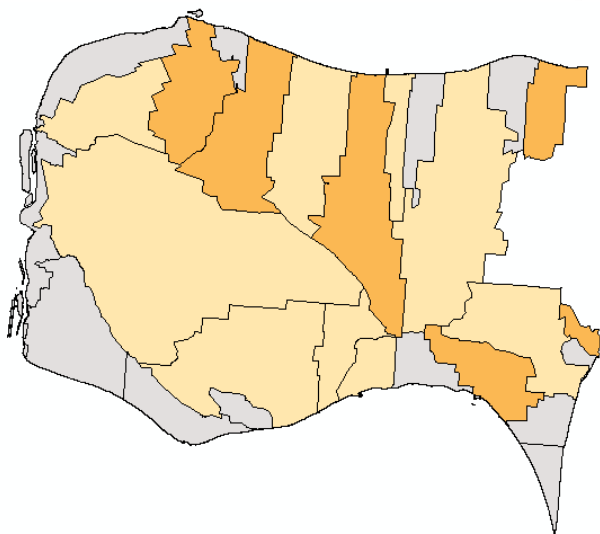
E.Coli

TP

2022



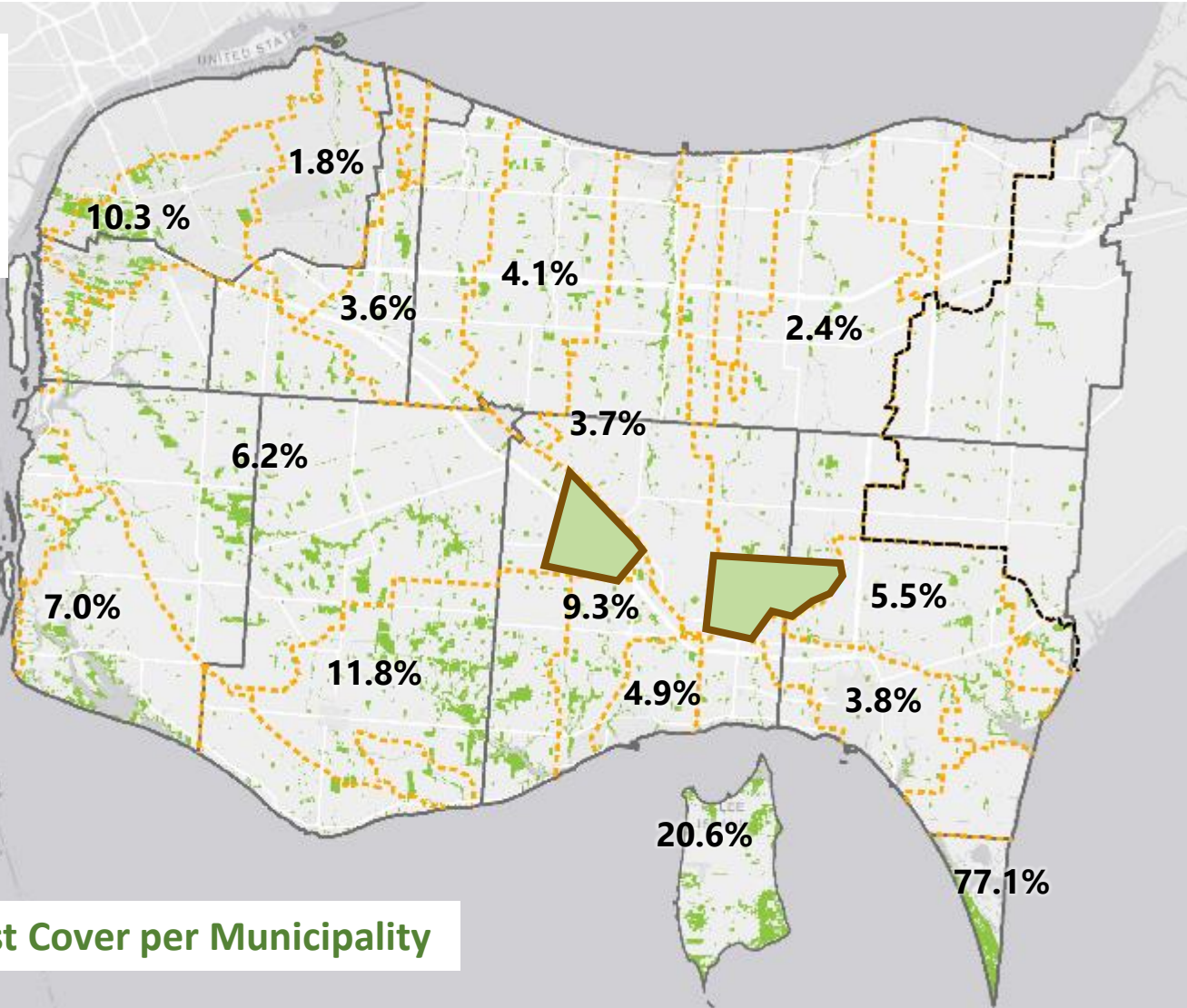
2017



Forest Conditions



Percent Forest Cover



8.5% - Forest Cover per Municipality

- 8.5% of our region is in a natural state
- UN goal: 12%
- Environment Canada: 30%

Impacts of Bills 229, 23



Categorizes Services into Mandatory and Non-Mandatory

Mandatory:

- Natural hazard management / risk mitigation and protection
- Flood and erosion control
- Management of conservation-authority owned land
- Drinking water source protection (under the Clean Water Act)
- Water Quality Monitoring limited to the Provincial Water Quality Monitoring Network (9 locations in the Windsor-Essex Region)

Impacts of Bills 229, 23



And Non-Mandatory:

- Restoration on lands not owned by ERCA
- Region-wide Water Quality Monitoring
- Recreational activities requiring staffing (e.g. – Holiday Beach)
- Museum Operations
- Community Outreach/Stewardship
- Special Events
- Agricultural outreach

All require agreements with each municipality for funding to continue, or must be funded separately.

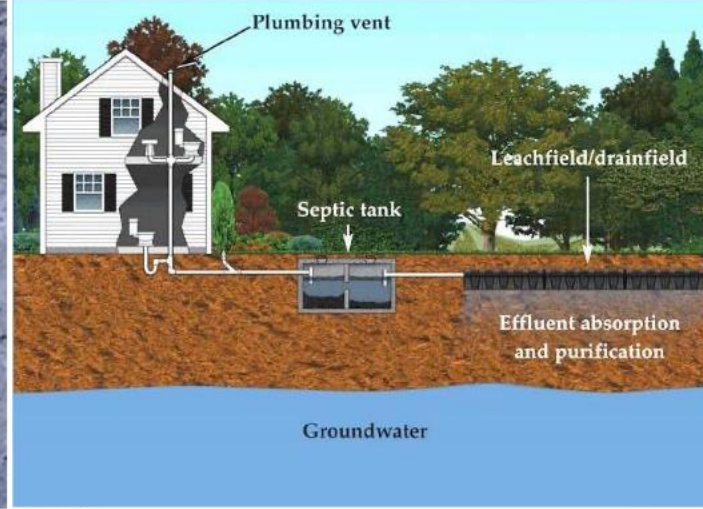
Bill 23 also specifically PROHIBITS Conservation Authorities from providing advice regarding Natural Heritage matters to municipalities.

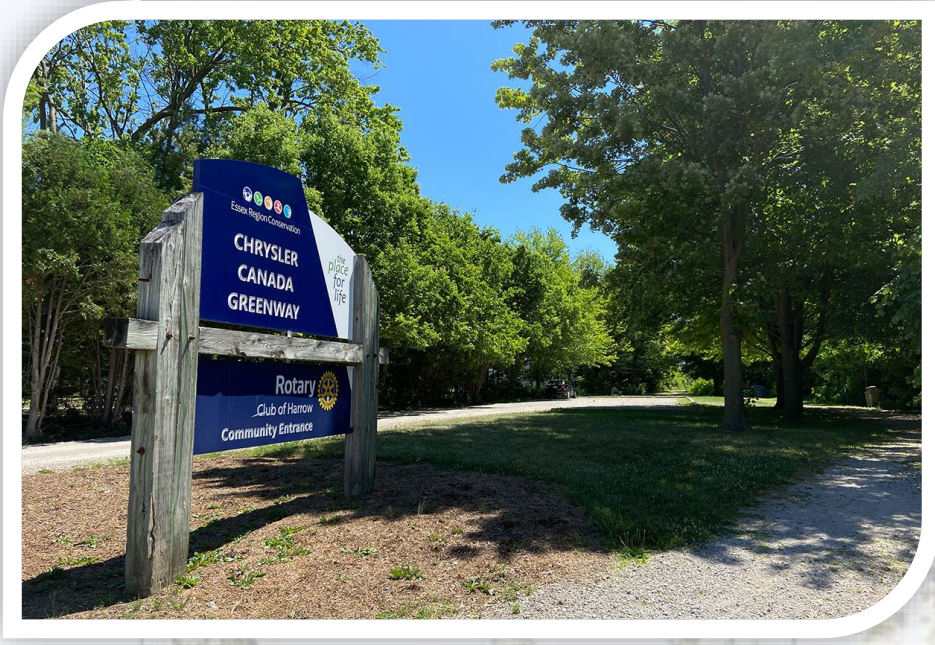
Essex Region Conservation Foundation



- Established in 1977
- Raises funds for regional conservation efforts
- Four fundraising pillars:
 - Greening our region and taking climate action
 - Connecting our region by trails
 - Inspiring future generations through conservation education
 - Preserving our heritage at the John R. Park Homestead
- Successes – only possible with generous partners! Greenway System and community entrances, LaSalle Woods, Rotary Legacy Forest, Solcz Family Foundation Forest, Conservation Centre at John R. Park Homestead....and the list goes on!

How Can We All Make an Impact?





Thank You!



Healthy Families Programs & Services

Janet Mullen & Shelley Dunn
Windsor–Essex County Health Unit





Healthy Families Department

Programs and Services: Brief Overview

Healthy Babies Healthy Children (HBHC)

A free and voluntary program delivered through Public Health Units in collaboration with hospitals and partners.

Helps families learn about:

- ✓ healthy pregnancy and birth
- ✓ how to connect with their baby
- ✓ how to support their baby's growth and development
- ✓ breastfeeding, food, and healthy nutrition
- ✓ taking care of themselves and their family
- ✓ community services (e.g., housing, food access, settlement support)

HBHC's Vision

- Every child at risk (prenatal to transition to school) in Ontario will be provided with opportunities to achieve his/her optimal potential.
- The program is designed to help ensure all children have a healthy start in life.



HBHC Goal

To promote optimal physical, cognitive, and psychosocial growth and development in children at risk

(HBHC Guidance Document)



- Universal screening
- Targeted assessments and interventions

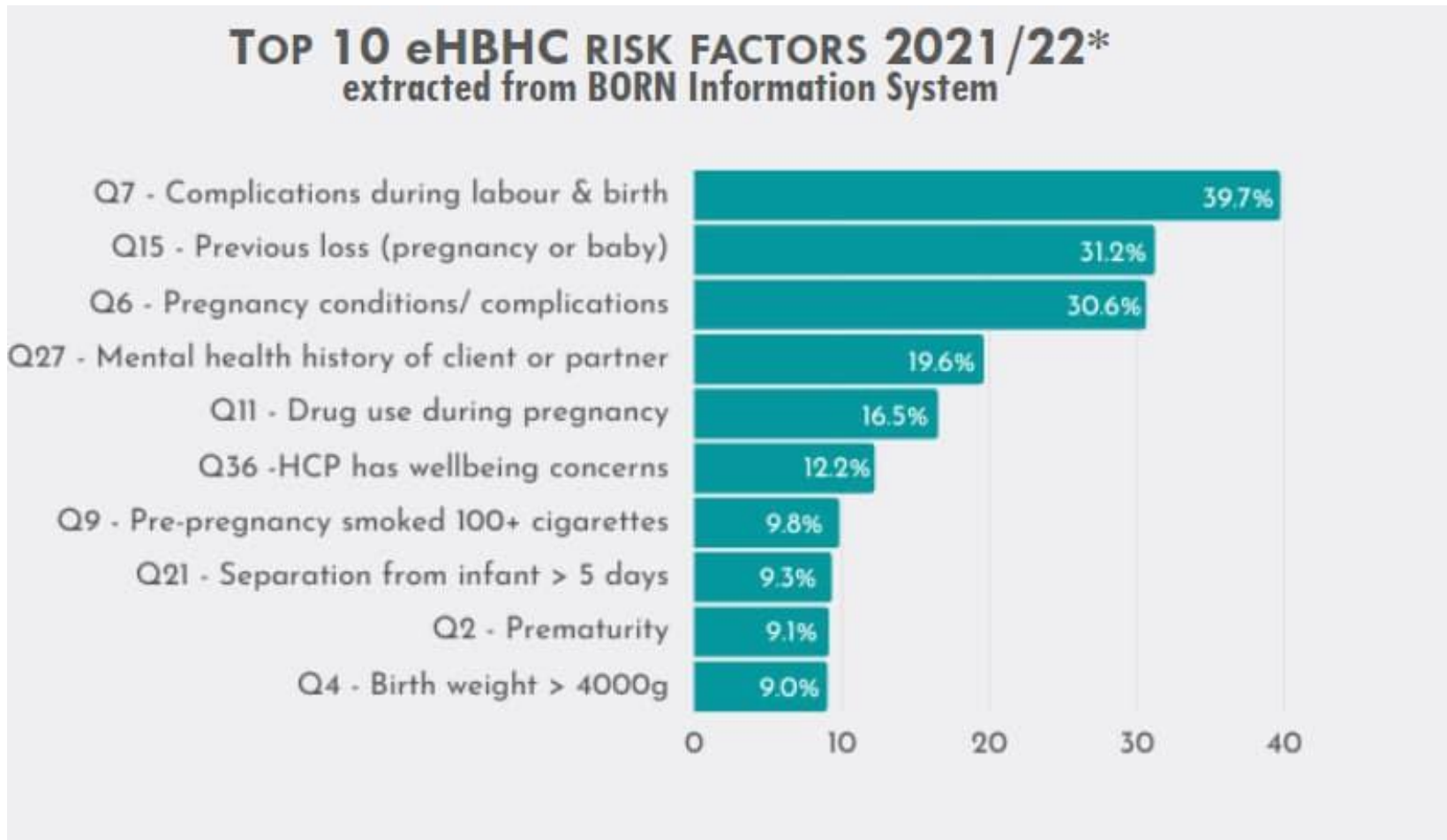


Through HBHC Screening we know:

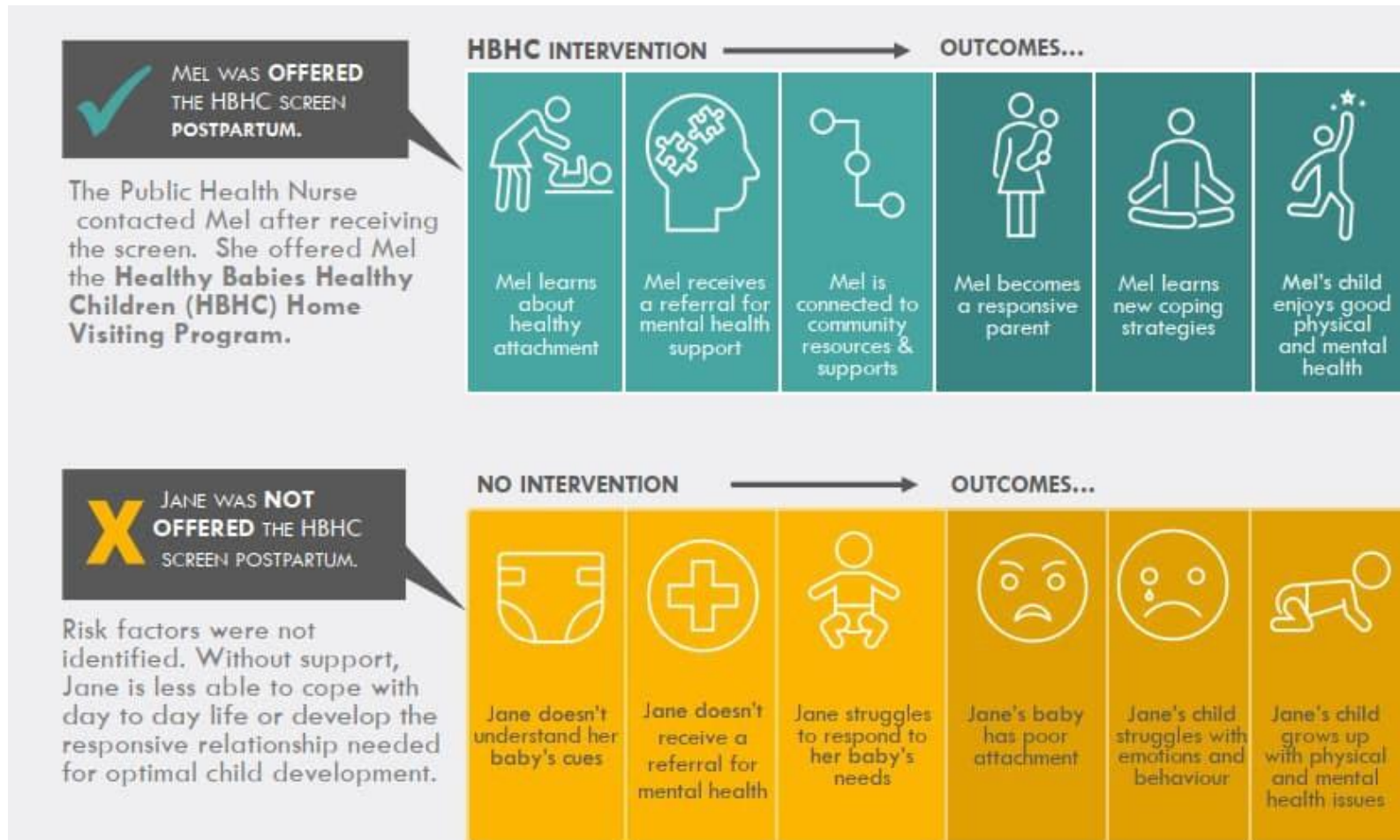
- 60% of Ontario families have potential factors that can impact healthy development outcomes for children
- 15% have greater than 5 risk factors



Top 10 HBHC Risk Factors 2021/22



Benefits of HBHC Intervention



HBHC Multidisciplinary Team

- Nurses (case manager role)
- Nurse Practitioner
- Family Home Visitors
- Social Worker(SDOH)
- Lactation Consultants

Client Focused Family Service Plan Goals

Optimal Prenatal Health	Effective Breastfeeding Maintenance
Positive Parenting	Healthy Attachment
Optimal Growth and Development	Safe Environment
Healthy Relationships	Parental Self-care
Optimal Parental Health	Independent Life Skills
Healthy Nutrition and Food Security	Financial Stability
Housing Stability	Continuing Education and Employment Training
Effective Settlement and Cultural Adaptation	Effective Management of Addiction and Dependency

What We Do

- Access to information and resources
- Early identification and intervention screening, assessment
- Blended family home visiting
- Service coordination
- Referral to community services



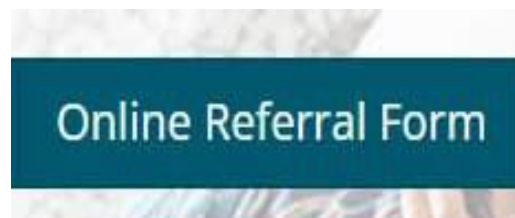
Social Worker's Role

To provide support in the following areas:

- Socio-economic situation, including financial resources and housing
- Education
- Employment
- Immigration Settlement

How Your Clients Can Access HBHC

- Self referral- call the Healthy Families Hotline 519-258-2146 ext. 1350
- On-line Referral form for agencies and self-referrals available on wechu.org/parents



Promotional Resources for Clients



**HEALTHY
BABIES
HEALTHY
CHILDREN**

We're here to help!

519-258-2146 ext. 1350
Monday to Friday
8:30 a.m. to 4:30 p.m.



Scan this code to learn more about our programs.

The Healthy Babies Healthy Children (HBHC) is a free, voluntary home visiting program. We support pregnant mothers and families with children from birth until entry to school.

Some of the topics we support are:

- Infant Feeding and Introduction of Solids
- Growth and Development
- Newborn Care
- Prenatal Support
- Parenting Support
- Mental Health Support
- Access to Community Resources

Services to Support YOUR PARENTING JOURNEY



If you are thinking about starting a family, are pregnant, or have children under 6 years of age, the Windsor-Essex County Health Unit (WECHU) offers the following FREE programs and services to support you through your parenting journey.

WECHU Website

wechu.org/parents
Our website provides information, resources and links on various topics such as pregnancy, infant feeding, newborn care, mental health, parenting, and more!

Translation is available on this website by clicking the word icon.

Healthy Families Hotline

519-258-2146 ext. 1350

Monday to Friday from 8:30 a.m. – 4:30 p.m.

A hotline for pregnancy, infant feeding, newborn care, mental health, parenting, or growth and development (birth to entry to school). You can also call the Healthy Families Hotline to register or enquire about the programs outlined in this factsheet.

Healthy Families Online Self-Referral

wechu.org/parents

An online referral form to have a Public Health Nurse call you regarding any of our programs and services, or answer your questions.

Healthy Babies Healthy Children Program (HBHC)

wechu.org/parents

A voluntary home visiting program. We support pregnant mothers and families with children from birth until school age. Some topics include infant feeding, growth and development, newborn care, prenatal support, parenting support, mental health support and access to community resources. Please call our Healthy Families Hotline or visit our website for more information.

Building Blocks for Better Babies (BBB)

519-877-0862

www.buildingblocksforbetterbabies.com

WECHU partners with Building Blocks for Better Babies (a Canada Prenatal Nutrition Program) to offer free weekly in-person and virtual classes taught by dietitians and nurses. Topics include healthy eating, breastfeeding support, care of mom and newborn and answers to pregnancy questions. Free prenatal vitamins and food vouchers are available for families who need them.



Other Services We Offer



Building Blocks for Better Babies

FREE pregnancy classes (in-person and virtual)

Offers:

- Answers to pregnancy questions
- Breastfeeding support
- Healthy eating information
- Support for mom and baby
- FREE vitamins and food vouchers

Other Services We Offer



Free BREASTFEEDING CLASSES AND SUPPORT

WE'RE HERE TO HELP!
Visit wechu.org/parents to access breastfeeding support



WINDSOR-ESSEX COUNTY HEALTH unit
Bureau de santé de Windsor-Comté d'Essex

The banner features a purple header with the text 'Free BREASTFEEDING CLASSES AND SUPPORT'. Below the header is a photograph of a smiling man and woman in a hijab looking at a tablet, and a close-up of a baby's head being held. At the bottom left is the WECHU logo, and at the bottom right is a QR code and the text 'WE'RE HERE TO HELP! Visit wechu.org/parents to access breastfeeding support'.

Other Services We Offer

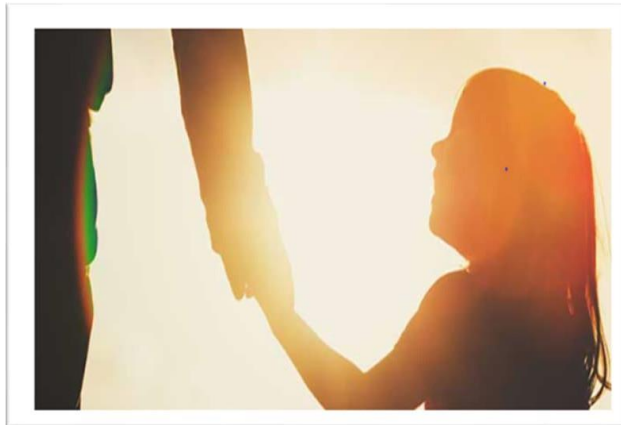


Circle of Security Parenting Program

8-week group-based program

Goal:

To support parents in building a healthy and secure relationship with their child/ren.



Other Services We Offers



Ask a Nurse- Hotline-

519-258-2146

ext. 1350

wechu.org/parents

Questions



The May Court Club Shoppe

Sharon Pyke

May Court Club





MAY COURT CLUB OF WINDSOR



May Court Club Shoppe

1122 Wyandotte Street East

Gently used clothing, housewares, bedding/towels
*Vêtements, articles ménagers, literie/serviettes
légèrement usagés*

Hours / Heures

Sunday/ *Dimanche* – Closed / *fermé*

Monday/ *Lundi* – Closed / *fermé*

Tuesday/ *Mardi* 10 a.m. – 4 p.m.

Wednesday/ *Mercredi* 10 a.m. – 4 p.m.

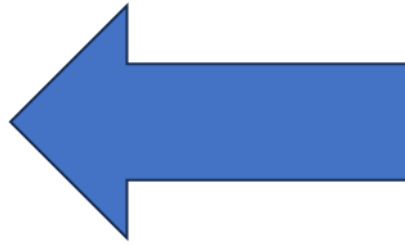
Thursday/ *Jeudi* 10 a.m. – 7 p.m.

Friday/ *Vendredi* 10 a.m. – 4 p.m.

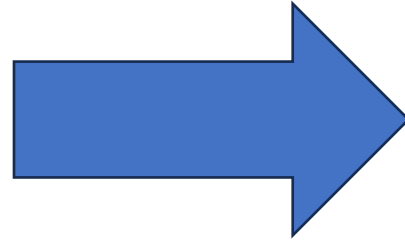
Saturday/ *Samedi* 11 a.m. – 3 p.m.



Top/ *haut* \$10
Capris / *corsaire* \$4
Purse / *sac à main* \$10

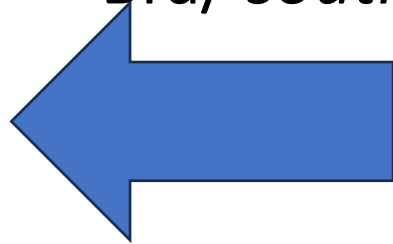


Dress/ *robe* \$10
Shoes/ *chaussures* \$9
Purse/ *sac à main* \$5
Necklace/ *collier* \$8

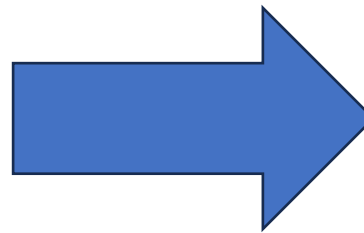




Top/ *haut* \$4
Leggings \$4
Shoes/ *chaussures* \$5
Bra/ *soutien-gorge* \$5

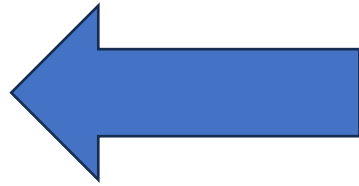


Top/ *haut* \$5
Pants/ *pantalons* \$6
Shoes/ *chaussures* \$5
Bra/ *brassière* \$8



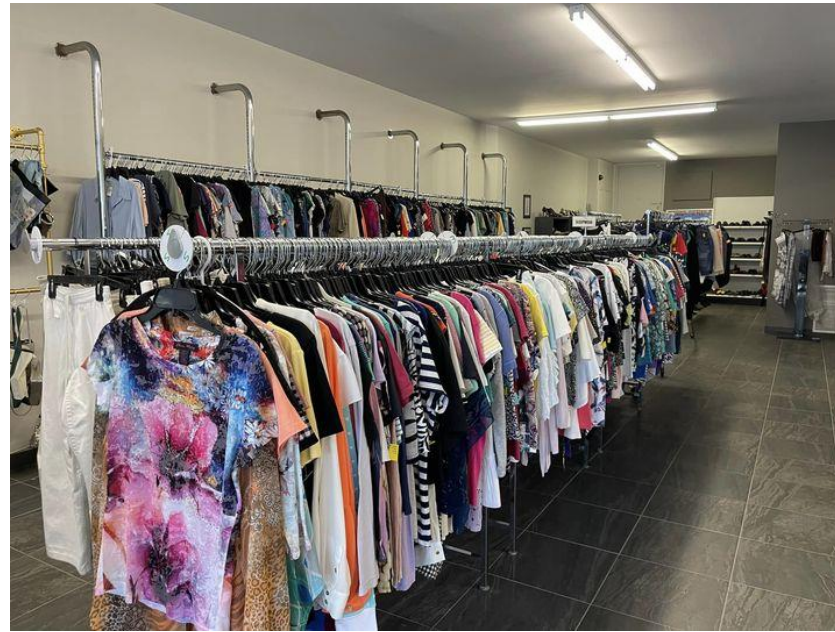


Dress/ robe \$10
Shoes / chaussures \$8
Purse / sac à main \$10
Necklace/ collier \$7



Dress/ robe \$15
Necklace/ collier \$7
Bag/ sac \$10
Shoes / chaussures \$5









The May Court Club Shoppe



Nisa Homes

Mariam Mahdi & Zainab Hussien





Nisa Foundation

Empowering Women, Transforming Lives



WHO WE ARE



Nisa Foundation is dedicated to transforming communities by engaging, equipping, and enriching the lives of women and children to help them reach their full potential.

Mission: Empower women and children to overcome challenges and inspire thriving communities.

Vision: A world where all women and families live with dignity and justice, fueled by women's empowerment.

Our Values



Justice & Equity (Adl)

Upholding the principles of fairness and justice for all, an ethos deeply embedded in both **Canadian and Islamic traditions.**



Community (Ummah)

Fostering a sense of belonging and unity, valuing the strength that comes from collective collaboration and **mutual support.**



Respect & Dignity (Karama)

Treating every individual with the respect they deserve, recognizing the inherent worth of every **human being.**



Compassion & Mercy (Rahmah)

Exhibiting compassion and kindness in our interactions, echoing the Canadian spirit of empathy and the **Islamic emphasis on mercy.**



Stewardship & Responsibility (Amanah)

Acting responsibly and ensuring the welfare of our community, land, and environment, resonating with both Canadian values of preservation and Islamic teachings of stewardship.



Excellence (Ihsan)

Ensuring excellence in everything we do is the core of our work ethic.

OUR PROJECTS

Nisa Homes

- Transitional Homes (Long Term Shelters)
- Culturally Responsive Model
- Catered to immigrant, refugee, and non-status women & children

Nisa Helpline

- Confidential & free North American helpline
- Muslim women focused
- Free counselling sessions with registered mental health professionals

Nisa Learning

- Curated to support Muslim communities, young men, community helpers & leaders and social services organizations
- Prevention focused educational workshops
- Educate & Equipe communities





OUR *History*

Opened a home in Mississauga, ON and Vancouver, BC

2015



Opened a home in Windsor, ON



2017



Opened 3 homes: Calgary, AB, Edmonton, AB and Scarborough, ON

2019



Opened 2 new homes: Ottawa, ON and Montreal, QC

2021



Opened 2 new homes, in Hamilton, ON and Halifax, NS.

2022



NISA HOMES LOCATIONS



SERVICES WE PROVIDE



Shelter
& Essential
needs



Financial
Assistance



In-Home &
Remote
Casework



Mental
Health



Programs
& Activities



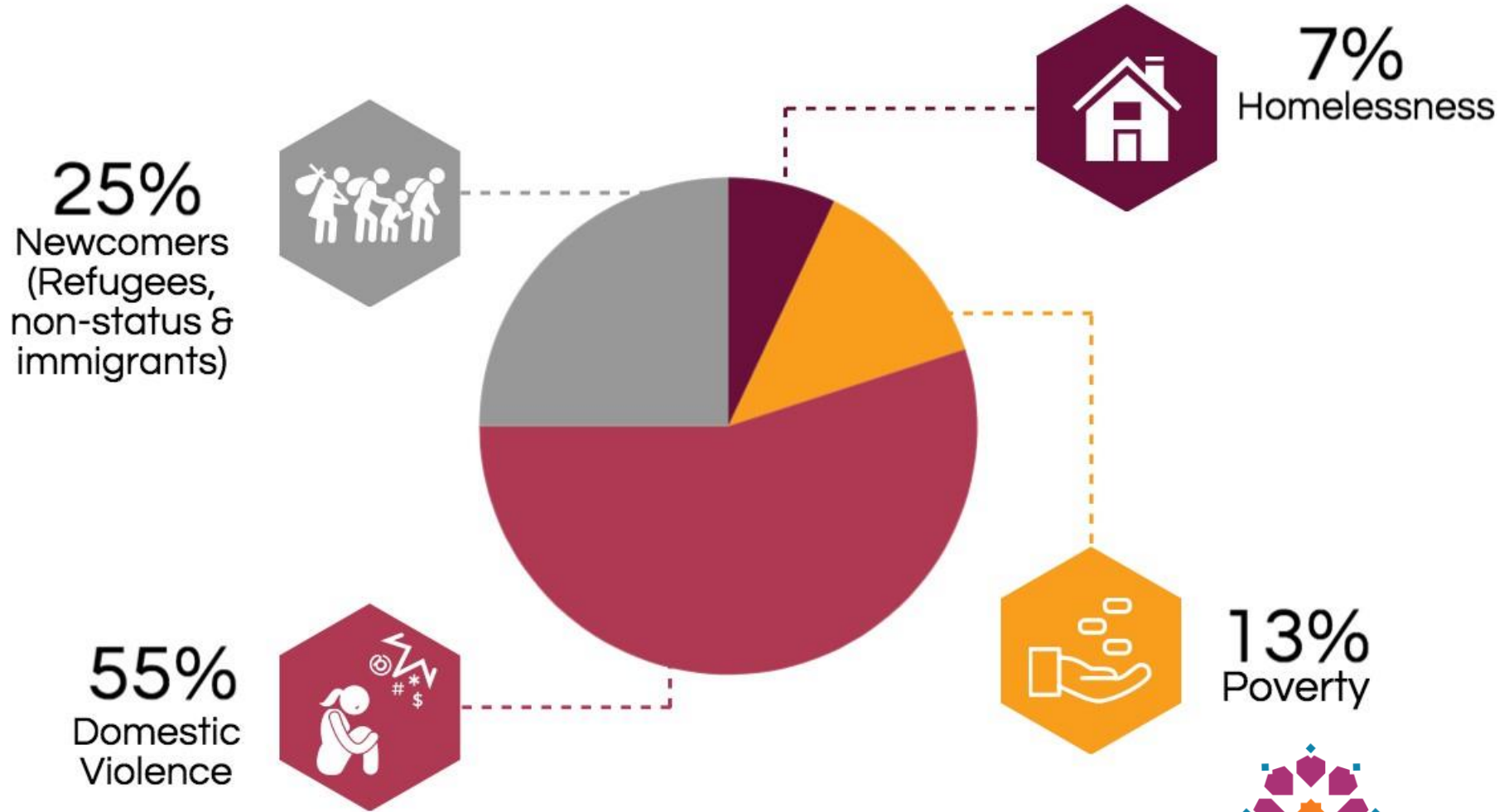
Children's
Program



Spiritual
Support



Reasons women seek safety & shelter at Nisa Homes:



Trauma Informed Lens: The Power of Language

What is wrong with her?

What happened to her?

She wants attention

She is trying to connect

She is manipulative

She struggles to ask directly what she wants

She is resistant & uncooperative

She is doing the best she can given the circumstances

She is making it up

It's hard for her to talk about it

This person is sick

This person is survivor of trauma

She should be over it already

Healing is a process, it takes time

Struggles faced by Refugee and Immigrant woman experiencing domestic abuse



INTAKE PROCESS



Clients apply online/by phone/referral

Response is within 48 hours after application

Conduct an intake assessment

If Nisa Homes is the right fit for them and they are the right fit for Nisa Homes, move in scheduled as soon as possible

RESIDENT PROCESS



Move In

**Needs
Assessment**

**Resident
Program**

Move Out



THE CHILDCARE PROGRAM

A decorative border at the top of the slide featuring a repeating pattern of colorful geometric shapes, including orange and purple zig-zags and teal diamonds.

Children's Program

The Nisa Homes childcare program offers:

- High-quality therapeutic, educational, and engaging services
 - Designed to foster holistic child and family development
 - Trauma informed
- Structured framework with dynamic creative processes
 - Flexibility to accommodate:
 - Changing ages
 - Developmental levels
 - Interests
 - Needs of the children

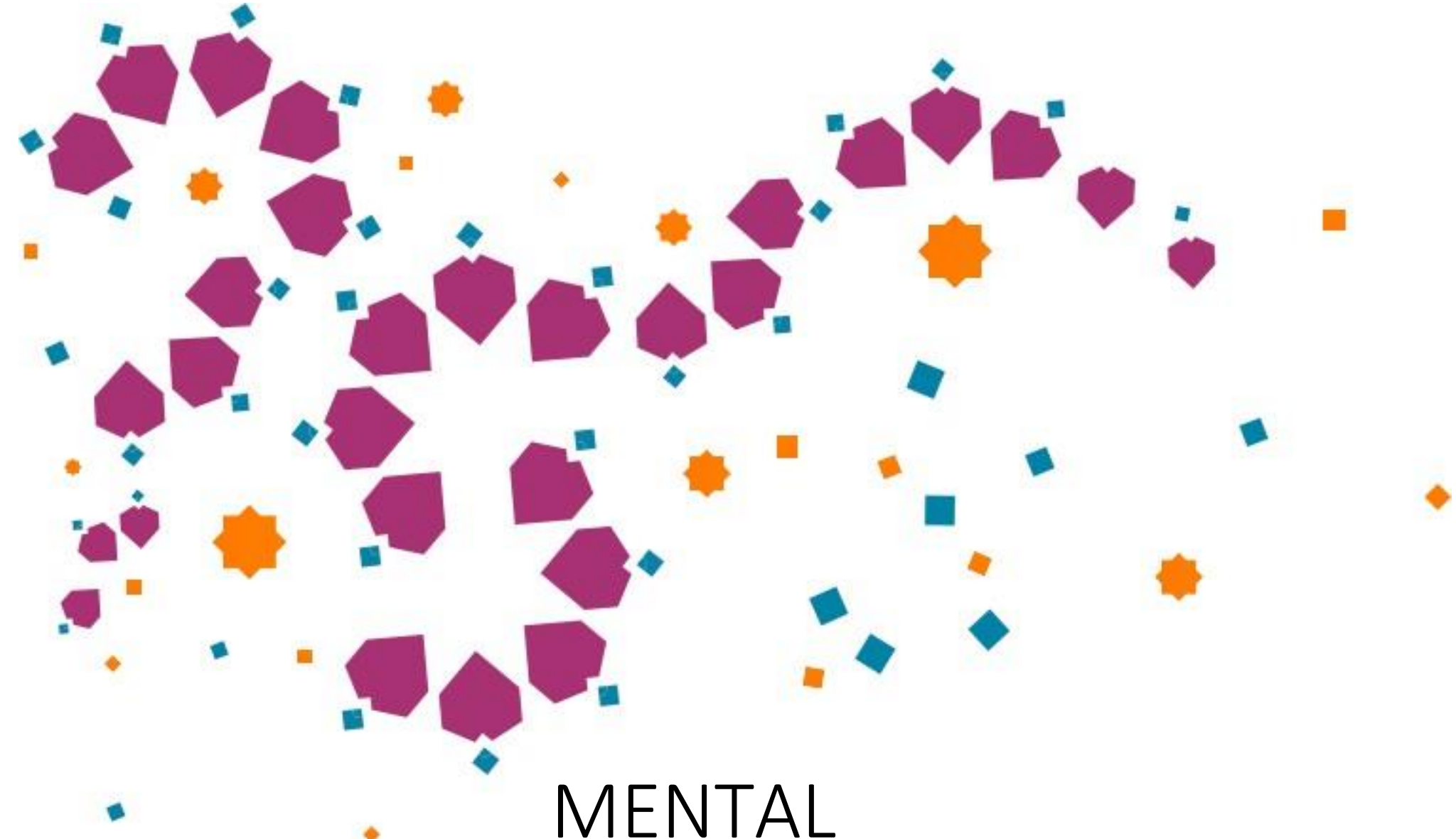
Childcare Activities



- Mindful Coloring
- ESL Lessons
- Gratitude Journaling
- Outdoor Play
- Back 2 School Prep
- 1-2-1 Support
- And much more

Expectations

- All Childcare Workers should have their Early Childhood Education or Child & Youth Care diploma (or equivalent)
 - + other appropriate training (ex. CPR/First Aid Certification)
- Regular professional development training in areas relevant to their work with children in a shelter setting
- Regular quality time with the children
 - in a group setting as well as one-on-one.
- Staff consistency
- Children's Needs Assessment
- Strong communication between parents and Childcare Workers
- Programming that is considerate of the varying ages, developmental levels, language barriers, cultural backgrounds, and particular circumstances.
- All toys and furniture are sanitized regularly, and the space is tidied up after each shift.
- culturally relevant posters, games, toys, books, and activities
- Trauma informed practice



MENTAL
WELLNESS PROGRAM



What Are We....?




The Mental Wellness Program aims to provide a safe, compassionate, and non-judgmental space for our residents to meet their diverse wellness goals. Residents have the freedom to engage in one on one, confidential, supportive counselling sessions as well as interactive and fun group activities.



Our licensed mental health professionals are committed to working with NH residents in areas including but not limited to managing anxiety-related symptoms, encouraging healthy coping mechanisms, enhancing self-esteem, and encouraging positive experiences.

EXPECTATIONS

- Our counsellors are certified in mental health at a Master's level and follow protocols relevant to our respective regulatory bodies
- Proficient in active listening, drawing upon a range of diverse disciplines, such as CBT, SFT, Motivational Interviewing, and others, to craft individualized treatment plans for each resident.
- Provide vital risk assessments, establish safety, and culturally appropriate mental wellness resources and referrals (ex. To community supports, parenting supports, and more)
- Housing First approach; working to help the client attain stability on their own terms

A woman with dark curly hair tied back, wearing a purple cardigan over a white top, is smiling and looking at a laptop. She is holding a baby in a light purple sweater. The baby is looking at the laptop keyboard. On the desk, there is a baby bottle with a blue cap and a white container with pens. The background is a bright, blurred indoor setting.

“Motherhood is the biggest gamble in the world. It is the glorious life force. It’s huge and scary – it’s an act of infinite optimism.” — Gilda Radner



**Together we can
heal & empower
women and
children.**



Questions

CONTACT US

 **in** @nisa.foundation

www.nisafoundation.ca

info@nisafoundation.ca

+1 (888) 711-6472



Upcoming Events

Évènements à venir



Windsor West Indian Association (Caribbean Centre)

Beauty is ME.

Caribbean Health Fair

Food, Music & Health Services!

- Blood Pressure & Glucose Testing
- Mental Health Support
- Connections to Healthcare

3pm-6pm, May 26th, 2024

@ St. Michael's Parish

29 Elliott St, Leamington, ON N8H 3M4

Funded by the Government of Canada / Financé par le gouvernement du Canada

Canada

TeamWork Project

workforce WindsorEssex

WIP Windsor Essex local immigration partnership

Caribbean Health Fair

May 26



University
of Windsor
School of Social Work



partenariat local d'immigration
windsor essex
local immigration partnership

**Save the
Date!**

Embracing Anti-racism Approaches in Integration Processes of Immigrants and Refugees in Windsor-Essex

An Interactive Professional
Development Workshop led by
Dr. Riham Al-Saadi



When? Wednesday, June 5 2024
9:00am - 12:00pm

Where? River Room Restaurant
277 Riverside Drive West,
Windsor



Register [here](#) by May 23, 2024
Questions? Contact rihama@uwindsor.ca

This event is made possible with the generous support of the Vice-President, People, Equity, and Inclusion's Diversity, Indigeneity, and Anti-racism Professional Development Fund awarded to Dr. Riham Al-Saadi, Assistant Professor at the University of Windsor's School of Social Work.



Funded by:
Immigration, Refugees
and Citizenship Canada

Financé par:
Immigration, Réfugiés
et Citoyenneté Canada

Embracing Anti- Racism Approaches in Integration Processes of Immigrants and Refugees in Windsor-Essex

June 5





World Refugee Day

June 20





Public Safety Day & Festival of Guest Nations

September 15

Newcomers Exploring In- Demand Jobs in Windsor-Essex Conference

October 9



Other Business



Next Meeting:

2024 Fall Council Meeting

September 12, 2024

1:30PM – 3:30PM

This meeting will take place virtually
via zoom



Networking Time!



We encourage you to go out on the patio for some networking.

Don't forget to take some handouts when you leave!